

Powerful Analytical Capabilities

With just the click of a button Epicor Active Planner gives you real-time budget variance analysis. For example, calculations based on anticipated unit sales can be updated any time to show actual sales, and for more informed decision-making you can analyze both price and unit variance. Active Planner also offers powerful what-if analysis features. One-time calculations allow you to analyze different scenarios within a single plan sheet, and multiple revisions let you analyze changes affecting the whole plan. With a simple drag-and-drop you can change your overall plan tree to study the anticipated effects of restructuring or growth.

Automate Distributed Budget Management

Finally, you're able to roll up or consolidate budget information, or push down strategic targets or common global values. You can perform operations on all or sections of the plan, such as locking, changing status or adding a new revision, and drag and drop sections to change consolidation hierarchy. You'll have superior management features at your command to automatically update plan values, push them down through the plan, recalculate them and instantly roll-up to reflect the changes. That's the power of Active Planner.

Pro-forma Financial Statements and Analysis

You can use Active Planner plan sheets for analysis and report preparation. For example, you can create a pro-forma financial statement that retrieves the actual results from your General Ledger for closed periods. The statement uses planned results and plan sheet formulas to project unclosed periods to arrive at an annualized budget. Active Planner plan sheets further lend themselves to advanced financial analysis of items, including cash flow and ratio review. With real-time integration to your existing applications, you can produce detailed, meaningful pro-forma cash flows on a weekly—even daily basis.

Powerful Insight with OLAP Analysis

Epicor Active Planner comes complete with multi-dimensional analysis tools that leverage Microsoft SQL Server™ online analytical processing (OLAP) Services in order to provide sophisticated information visualization. With Active Planner, you can analyze data that is organized according to hierarchical business dimensions. Data is published automatically from Plan Sheets to OLAP cubes, facilitating iterative slice-and-dice analysis to illustrate patterns, highlight trends and exceptions.

Leverage Microsoft SQL Server

Epicor Active Planner is built exclusively on advanced business intelligence technologies from Microsoft. It leverages powerful components of Microsoft® SQL Server™, such as Data Transformation Services, Analysis Services and other tools, for data collection, transformation, administration and OLAP analysis which is easy for you to deploy, extend and maintain.

Epicor Active Planner has the awesome power and built-in benefits to help your company manage budgets in minutes rather than days or weeks.

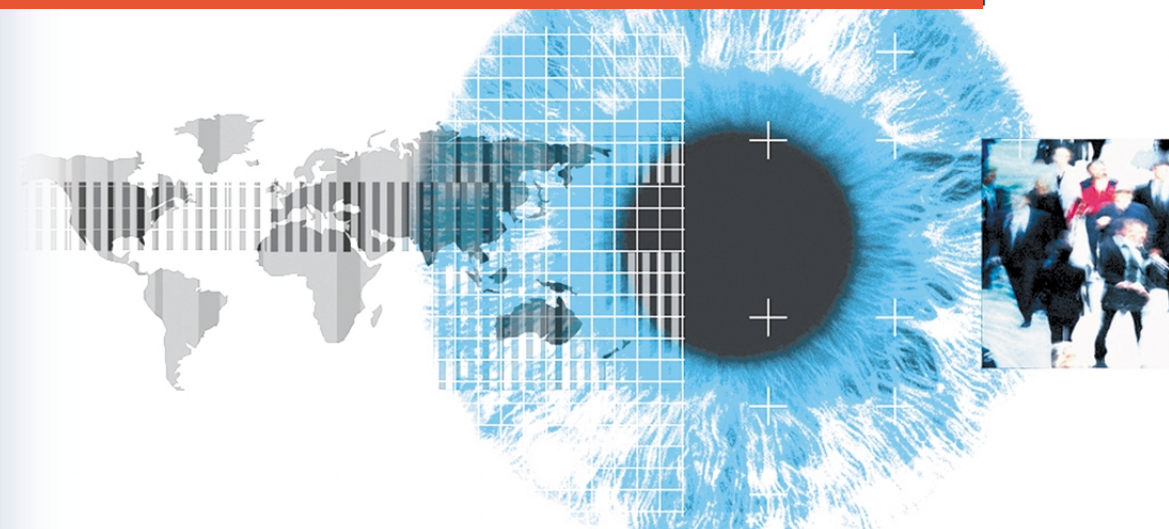
Take Control of Your Budgeting and Planning Today

For more information on how Epicor Active Planner can help you manage your budgets and target more effectively, contact Epicor Software at (800) 449-6772 or info@epicor.com

EPICOR®

©2006 Epicor Software Corporation. Epicor and the Epicor logo are registered trademarks of Epicor Software Corporation. The products depicted in this document are produced by Epicor Software Corporation. All other trademarks acknowledged. All rights reserved. This document is for informational purposes only and is subject to change without notice. Epicor makes no warranties, express or implied in this document. The contents of this document are believed to be current and accurate as of its date of publication. For a complete description of the product features, please refer to the products user guides, reference manuals and release notes.

Epicor Active Planner



Reacting quickly to change is essential for success in a vibrant business environment. Having a strategic tool that provides flexibility to manage the most complex, organization-wide budget development gives you the edge you need, and allows you more time to analyze trends and improve performance.

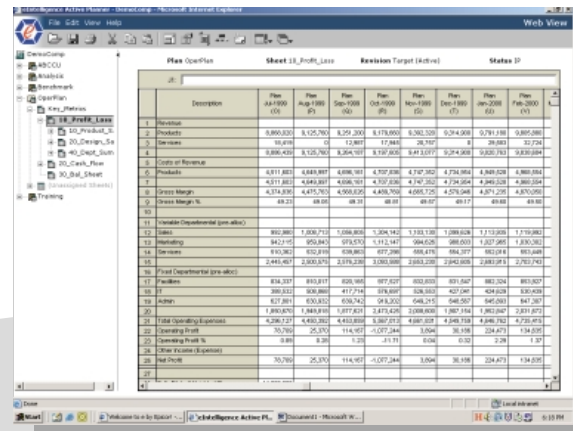
Introducing Epicor Active Planner – an innovative and effective tool that gives you full control over the entire budgeting process. It encourages enterprise-wide collaboration, incorporating unlimited information sources and utilizing advanced modeling and data visualization tools.

What does this mean to you?

- Provides a complete overview of roll up or consolidated budget information
- Refreshes the latest information in the system at the touch of a button
- Saves hours of time, labor costs and more
- Web Based Plan Sheets– allows input from anywhere in the world
- Has spreadsheet look and feel
- Furnishes instant updates to measure impact of global variables
- Allows for what-if scenarios
- OLAP data cube allows for easy comparison and analysis of data
- Extremely powerful

EPICOR®

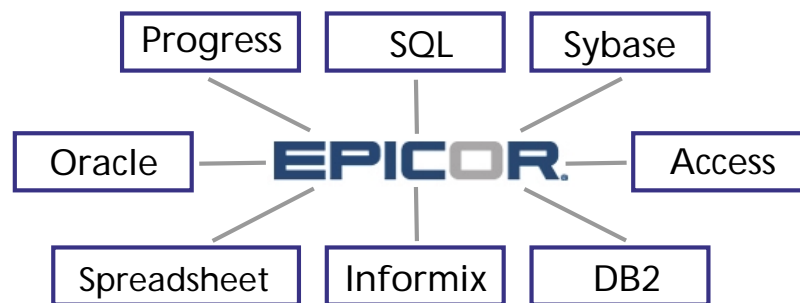
“Active Planner incorporates operational, environmental (interest and exchange rates), capital and cash flow components into a single Enterprise budget and forecast point.”



Put our intelligence to work for your company and reap the benefits

Epicor Active Planner is designed to work with you and your systems creating a seamless source for enterprise-wide budget control and analysis.

Technical Integration



Active Planner links together any number of disparate data sources – financial, payroll, operations, treasury, sales orders, production orders, inventory, claims – regardless of format – SQL, DB2, Oracle, Sybase, Informix, Progress, spreadsheet, Access – any ODBC compliant source.

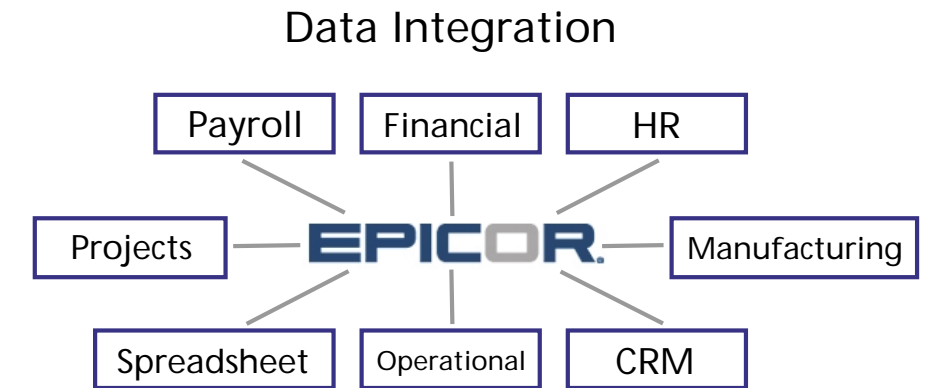
Integrated Budget Plan Sheets – that look familiar

Epicor Active Planner has a spreadsheet look and feel, which makes users instantly comfortable. Active Planner uses integrated budget plan sheets to create and manage each piece of your enterprise budget. In addition to typical spreadsheet functions, the plan sheets can calculate the number of days in the fiscal period and the number of periods in the year and can be accessed via the Internet.

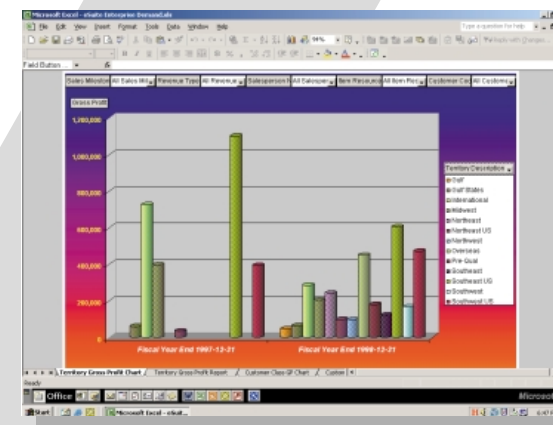
Now you can produce Powerful Calculations with Seamless Data Integration

If you've searched for a system that provides a powerful formula engine to quickly construct virtually any budget calculation - your search is over. With Epicor Active Planner at your fingertips you'll have unlimited formula lines linked to account and range balances, fixed amounts, external database queries or other plan sheet values, to provide unparalleled power and flexibility. And you'll never have to import or re-key information again thanks to Active Planner formulas that can access information from any OLE-DB or ODBC-compliant database.

Combinations of databases can also be used within a single formula. For example, payroll rates from HR can be combined with anticipated head counts from a Microsoft® spreadsheet. Variables can also be passed into formulas to easily reuse a single formula for multiple accounts, products or periods. It's that easy, that versatile and that powerful.



“Active Planner calls on every piece of information needed – no matter what the technology, platform or system – and pulls it all together to provide analysis, revisions and what-if scenarios... all with real time integration.”



Epicor's Active Planner offers Complete Integration with:

- existing financial systems providing instant mapping of General Ledger accounts and periods with real time updates of actual transaction amounts.
- existing payables, receivables and purchase and sales order information for cash flow forecasting.
- operating systems, maintenance systems, project systems and CRM systems for inclusion in enterprise planning.
- virtually any ERP system.